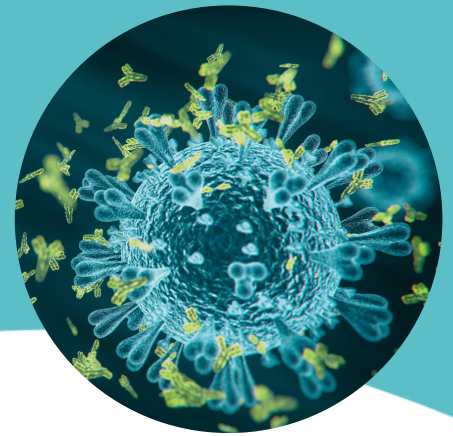


Candida + IBS Profile



Who Will Benefit from Candida + IBS Profile testing?

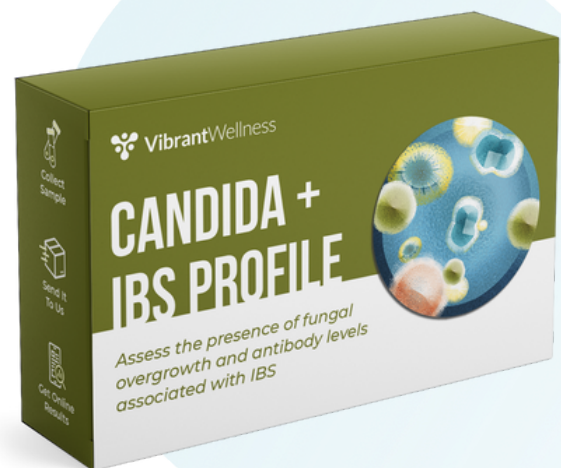
The Candida + IBS Profile assesses the presence of Candida (fungal) overgrowth, antibody levels associated with Irritable Bowel Syndrome (IBS), and autoimmune-related alterations in intestinal motility.

You may benefit from this panel if you've been diagnosed with or suspect intestinal permeability, exposure to mold or other fungi, autoimmune disease, or chronic inflammation.

Recognizing Symptoms of IBS and Bacterial/Fungal Overgrowth

Symptoms include:

- Cramping
- Abdominal pain
- Digestive issues: Bloating, gas, diarrhea, constipation
- Malabsorption
- Unintentional weight loss/weight gain
- Nutritional deficiencies
- Osteoporosis
- Steatorrhea
- Vitamin excess- folate
- Hypoproteinemia/hypo-albuminemia
- Mental acuity symptoms including brain fog, fatigue, and anxiety
- Impotence
- Heartburn
- Dietary intolerance to certain carbohydrates, fibers, and alternative sweeteners
- Bad breath (halitosis)
- Oral thrush
- Skin conditions: Acne, itching dermatitis
- Dandruff
- Nail fungus
- Discolored nails
- Hives
- Poor memory
- Tingling
- Mood swings
- Adrenal and thyroid malfunction
- Sex hormone imbalances



Why is This Test Important?

- IBS is the most common gastrointestinal disorder, with worldwide prevalence rates ranging from 10-15%.¹
- Candida is a fungal pathogen that is healthy in normal amounts, but if allowed to overgrow, it can wreak havoc on the digestive system and create an imbalanced gut microbiome.
- Candida overgrowth can also cause infections in the bloodstream or major organs; Candidemia is one of the most common bloodstream infections in the US.²
- Fungal or bacterial overgrowth and infections can cause increased intestinal permeability, leading to chronic inflammation and conditions such as IBS.
- The Vibrant Wellness Candida + IBS Profile helps identify IBS-diarrhea predominant (IBS-D) or IBS-mixed type (IBS-M) associated with fungal/bacterial overgrowth and determine if pathogens are at the root of your digestive symptoms.
- The panel will allow you to discover the source of your symptoms and build a personalized wellness plan with your provider to address inflammation, resolve fungal or bacterial overgrowth, and improve your lifestyle.

The Vibrant Wellness Advantage

Simple testing with robust results. Perform the Candida + IBS Profile panel in the comfort of your home.

Unparalleled specificity and sensitivity. Our proprietary technology detects:

- Two different blood-based antibodies to differentiate between IBS and IBD.
- Anti-CdtB antibodies (to detect past cases of food poisoning)
- Vinculin antibodies (to rule out the presence of IBD)
- Antibodies to 10 common fungal antigen common fungal antigens

Validated and accredited. Science-backed testing and analysis based on rigorous, ongoing research by clinical experts.

What to Expect from the Test

1. Follow our simple instructions to perform this test either at home or at a blood draw center.
2. Before testing:
 - You do not need to fast before your Candida + IBS Profile test.
 - There are no diet or dietary supplement restrictions required before testing.
 - Your provider may ask you to discontinue medications or dietary supplements. Speak with your provider to learn more.
3. Send the test to our labs for analysis and work with your care provider to understand the results.

About Vibrant Wellness

Vibrant Wellness is a leading CLIA-certified and CAP-accredited biotech company based in San Carlos, CA. We deliver life-transforming lab testing that enables health and wellness providers to discover the root of patient health issues.

We're at the forefront of modern medicine and research, providing personalized health analytics using cutting-edge, high-quality technology. We believe that anyone can achieve better health and vibrant longevity through individualized solutions based on testing—not guessing.

References:

1. <https://gi.org/topics/irritable-bowel-syndrome/>
2. <https://www.cdc.gov/fungal/diseases/candidiasis/invasive/statistics.html>

Regulatory Statement

The general wellness test intended uses relate to sustaining or offering general improvement to functions associated with a general state of health while making reference to diseases or conditions. This test has been laboratory developed and its performance characteristics determined by Vibrant America LLC and Vibrant Wellness, CLIA-certified and CAP-accredited laboratory performing the test. The test has not been cleared or approved by the U.S. Food and Drug Administration (FDA). Although FDA does not currently clear or approve laboratory-developed tests in the U.S., certification of the laboratory is required under CLIA to ensure the quality and validity of the tests.