

# Celiac Panel



## Who Will Benefit from the Celiac Panel?

The Celiac panel tests for celiac disease, an autoimmune reaction to gliadin, the alcohol-soluble portion of gluten. Gliadin is found in grains, wheat, rye, barley, and to a lesser extent, oats.

If you were diagnosed with or suspect gluten sensitivity, autoimmune disease, malnutrition, or malabsorption, you may benefit from this panel.

## Recognizing Symptoms of Celiac Disease

### Symptoms include:

- Bronchitis and asthma symptoms
- Depression or anxiety
- Iron-deficiency/anemia
- Fatigue
- Arthritis
- Seizures or migraines
- Bone loss or osteoporosis
- Irregular menstrual periods
- Infertility or recurrent miscarriage
- Dermatitis herpetiformis (itchy skin rash)
- Mouth ulcers
- Tingling or numbness in the hands and feet
- Bone or joint pain



## Why is This Test Important?

- An estimated 1 in 100 people worldwide are affected by celiac disease.<sup>1</sup>
- Celiac disease and gluten sensitivity have two different immune responses to gluten. The symptoms are very similar and make it nearly impossible to determine which condition the patient may have without testing.
- When undiagnosed, celiac disease can cause severe symptoms such as profound malabsorption, steatorrhea, wasting, as well as chronic inflammation.
- Additionally, there are associations between celiac disease and other major conditions such as Type I Diabetes mellitus, thyroid disease, and other autoimmune diseases.
- The Celiac Panel can help you get to the root of chronic inflammation, disease, and adverse symptoms and create a nutrition plan with your provider to start feeling better.

## The Vibrant Wellness Advantage

**Unparalleled specificity and sensitivity.** Our proprietary technology detects:

- IgA and IgG antibodies
- Reactivity to gliadin, the alcohol-soluble portion of gluten

**Validated and accredited.** Science-backed testing and analysis based on rigorous, ongoing research by clinical experts.

## What to Expect from the Test

1. Follow our simple instructions to perform this test at a blood draw center.
2. Before testing: You do not need to fast before your Celiac panel. We recommend consuming your “normal” diet before testing – meaning we do not recommend excluding gluten from your diet before testing, as this could affect results. Your provider may ask you to discontinue medications or dietary supplements. Speak with your provider to learn more.
3. Send the test to our labs for analysis and work with your care provider to understand the results.

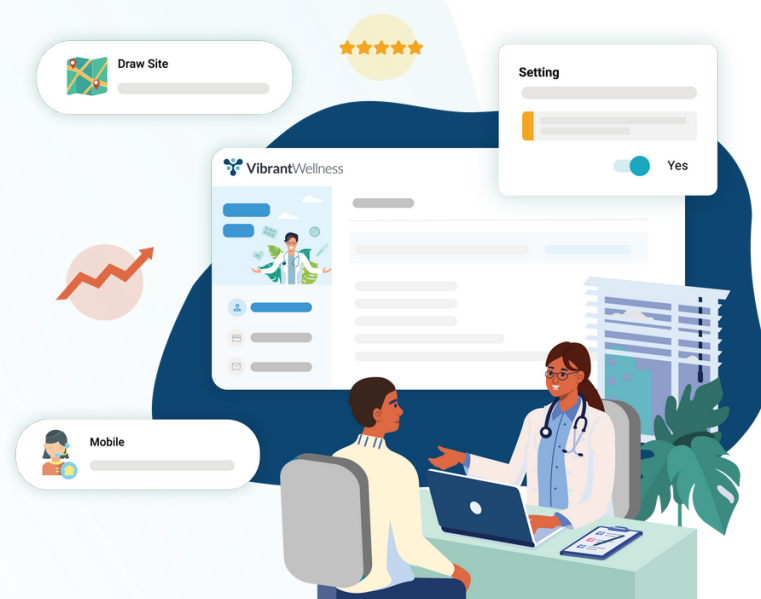
## About Vibrant Wellness

**Vibrant Wellness** is a leading CLIA-certified and CAP-accredited biotech company based in San Carlos, CA. We deliver life-transforming lab testing that enables health and wellness providers to discover the root of patient health issues.

We're at the forefront of modern medicine and research, providing personalized health analytics using cutting-edge, high-quality technology. We believe that anyone can achieve better health and vibrant longevity through individualized solutions based on testing—not guessing.

### References:

1. <https://celiac.org/>



### Regulatory Statement

The general wellness test intended uses relate to sustaining or offering general improvement to functions associated with a general state of health while making reference to diseases or conditions. This test has been laboratory developed and its performance characteristics determined by Vibrant America LLC and Vibrant Wellness, CLIA-certified and CAP-accredited laboratory performing the test. The test has not been cleared or approved by the U.S. Food and Drug Administration (FDA). Although FDA does not currently clear or approve laboratory-developed tests in the U.S., certification of the laboratory is required under CLIA to ensure the quality and validity of the tests.