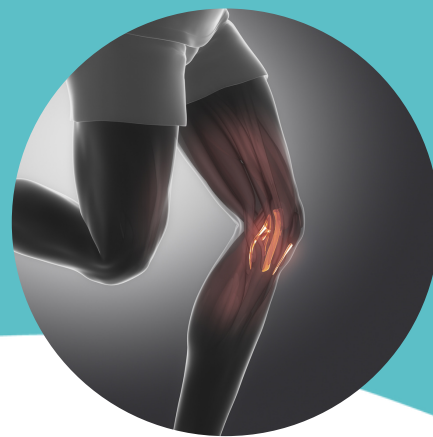
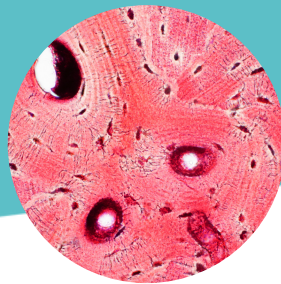


Connective Tissue Disorders



Who Will Benefit from the **Connective Tissue Disorders Test?**

The Connective Tissue Disorders panel tests for signs of a connective tissue disorder and provides a disease risk assessment.

Connective tissue disorders (CTD) are a group of medical diseases where the connective tissues of the body are attacked. Most CTDs feature abnormal immune system activity with autoimmune-induced inflammation, where the body attacks its own connective tissues.

If you are diagnosed with or suspect chronic inflammation, autoimmune disease, or a wheat-related disorder, you may benefit from this panel.

Recognizing Symptoms of Connective Tissue Disorders

Symptoms include:

- Hair loss
- Muscle pain
- Numbness or tingling in the hands or feet (Raynaud's syndrome)
- Inflammation and damage to organs and tissues including the kidney, lungs, heart, lining of the heart, central nervous system, and blood vessels
- Low-grade fever
- Persistent fatigue and weakness
- Arthritis-like pain in one or more joints
- Red rash (for lupus, one resembling a butterfly across the nose and cheeks)
- Skin sensitivity to light

Why is This Test Important?

- Connective tissue disorder is highly inflammatory and tends to occur alongside other autoimmune disorders, including Raynaud's Phenomenon, Neuropathy, Anemia, and Pleurisy or Pleuritis.
- More than two million Americans suffer from the CTD rheumatoid arthritis.¹
- Symptoms of CTD are difficult to diagnose. On average, people suffer with CTD symptoms for over three years before diagnosis.²
- The Vibrant Wellness Connective Tissue Disorders test provides the most comprehensive view of CTD in a single test run.
- The panel allows you to predict, detect, monitor, and manage CTD, helping you and your provider optimize a therapeutic outcome.

The Vibrant Wellness Advantage

Unparalleled specificity and sensitivity. Our proprietary technology detects:

- Well-established CTD serological biomarkers
- Antinuclear antibodies and autoantibodies
- Extractable nuclear antigens
- Several antibodies specific to connective tissue disorders
- Additional disease-specific markers

Validated and accredited. Science-backed testing and analysis based on rigorous, ongoing research by clinical experts.

What to Expect from the Test

1. Follow our simple instructions to perform this blood test at a blood draw center.
2. Before testing: You do not need to fast before your Connective Tissue Disorders test.
3. Send the test to our labs for analysis and work with your care provider to understand the results.

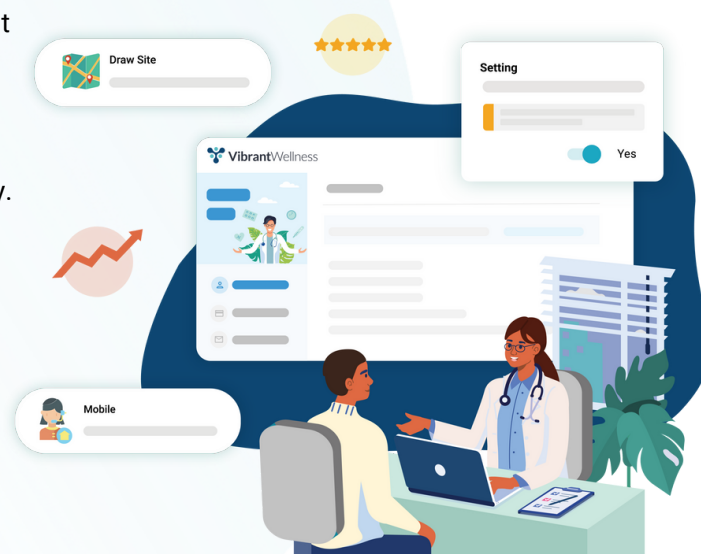
About Vibrant Wellness

Vibrant Wellness is a leading CLIA-certified and CAP-accredited biotech company based in San Carlos, CA. We deliver life-transforming lab testing that enables health and wellness providers to discover the root of patient health issues.

We're at the forefront of modern medicine and research, providing personalized health analytics using cutting-edge, high-quality technology. We believe that anyone can achieve better health and vibrant longevity through individualized solutions based on testing—not guessing.

References:

1. Jacobson DL, Gange SJ, Rose NR, Graham NMH. Epidemiology and estimated population burden of selected autoimmune diseases in the United States. *Clin Immunol Immunopathol.* 1997;84:223-243
2. Ungrasert P, Crowson CS, Chowdhary VR, et al. Epidemiology of Mixed Connective Tissue Disease, 1985–2014: A Population-Based Study. *Arthritis Care Res.* 2016;68:1843-1848.



Regulatory Statement

The general wellness test intended uses relate to sustaining or offering general improvement to functions associated with a general state of health while making reference to diseases or conditions. This test has been laboratory developed and its performance characteristics determined by Vibrant America LLC and Vibrant Wellness, CLIA-certified and CAP-accredited laboratory performing the test. The test has not been cleared or approved by the U.S. Food and Drug Administration (FDA). Although FDA does not currently clear or approve laboratory-developed tests in the U.S., certification of the laboratory is required under CLIA to ensure the quality and validity of the tests.