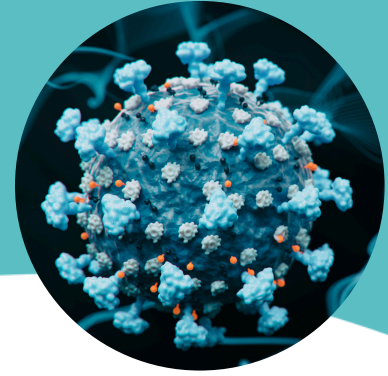


Lyme Autoimmune Test



Discover the Root Cause of Your Unexplained Symptoms with the Lyme Autoimmune Test

Living with chronic conditions can be exhausting and frustrating—especially when the root cause remains unidentified. The Lyme Autoimmune test provides clarity and insight into your health by identifying antibodies against specific antigens related to Lyme disease that can trigger autoimmune conditions due to molecular mimicry. This test focuses on arthritis, carditis, and neuroborreliosis, conditions that affect many people in Lyme-prevalent areas.

These conditions can impact virtually every part of the body, leading to chronic fatigue, joint pain, neurological issues, heart irregularities, and more.

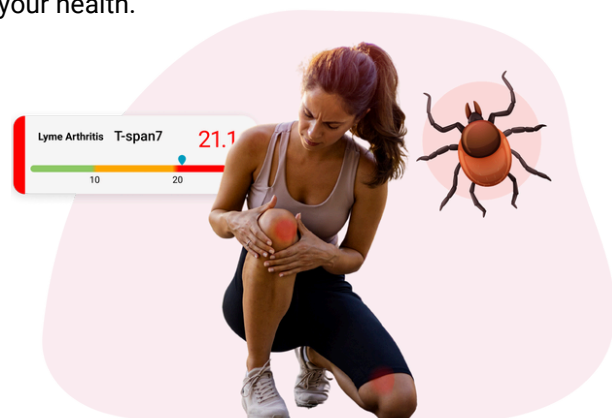
The Lyme Autoimmune test is a comprehensive tool to detect and monitor autoimmune responses triggered by Lyme disease. This advanced test measures specific antibodies and antigens, providing detailed insights into the activity of your immune system.

Why Choose the Lyme Autoimmune Test?

- **Get Answers:** No more guessing games. Understand whether your chronic symptoms are linked to Lyme disease-related autoimmune responses, such as Lyme arthritis, Lyme carditis, or Lyme neuroborreliosis.
- **Early Detection:** Catch potential autoimmune issues early. Early detection means you and your healthcare provider can take vital steps sooner.
- **Personalized Care:** With precise information about your immune system, your healthcare provider can tailor a treatment plan specifically for you, addressing the root cause of your symptoms.
- **Peace of Mind:** Knowing what's happening in your body can relieve the stress and anxiety of not knowing. Empower yourself with knowledge to confidently manage your health.

How It Works

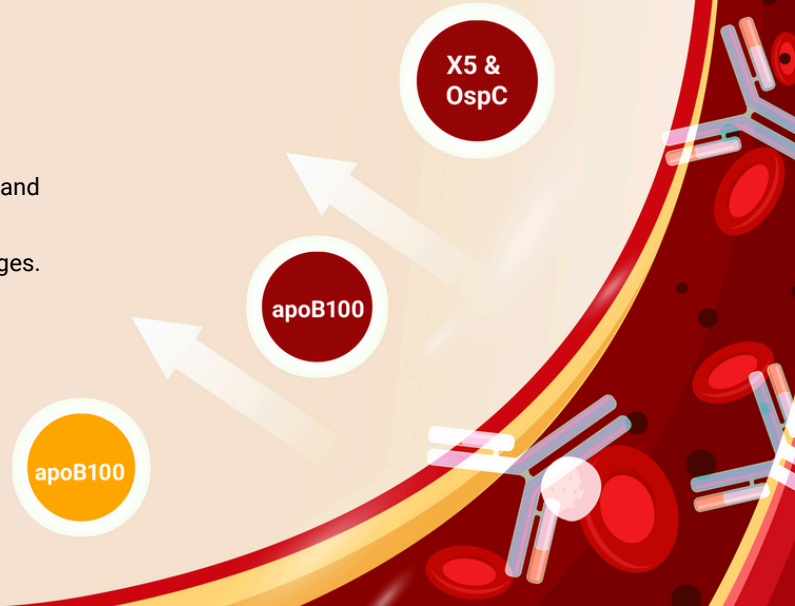
The Lyme Autoimmune test assesses antibodies against specific antigens related to Lyme disease that are known to trigger or mimic autoimmune conditions. A simple blood sample measures these markers, providing a deep understanding of potential immune-mediated tissue damage.



Key Markers Include:

- **LFA-1 α** and **MMP-10**: Identify inflammation, immune response, and tissue breakdown.
- **ECGF** and **ApoB100**: Show inflammation and blood vessel changes.
- **T-span7** and **D1R** (Dopamine 1 receptor): Linked to immune responses affecting nerve cells and indicate brain and nerve involvement.

By analyzing these markers, the test provides a comprehensive picture of your immune system's activity, helping your healthcare provider pinpoint the cause of your symptoms.



Who Should I This Test?

- If you have **chronic fatigue**, **joint pain**, or **unexplained neurological issues**.
- If you experience **heart irregularities** or other **Lyme-like symptoms**.
- If you have a **family history** of **autoimmune diseases**.
- If you've had a **tick bite** or live in an area where **Lyme disease** is prevalent.

Detect antibodies against specific antigens related to **Lyme disease** that are known to trigger or mimic autoimmune conditions

Joints

Brain

Heart

Take the First Step Towards Better Health

You don't have to wonder what's happening in your body. The Lyme Autoimmune test provides valuable insights into your health, paving the way for a personalized treatment plan that addresses the root causes of your symptoms.

Take the first step towards improved health and quality of life by ordering your Lyme Autoimmune test today.

An infographic detailing Lyme disease symptoms and detection. At the top, it states: 'Detect antibodies against specific antigens related to Lyme disease that are known to trigger or mimic autoimmune conditions'. Below this, three red buttons labeled 'Joints', 'Brain', and 'Heart' are shown. A large illustration of a tick is positioned to the right. Below the buttons, three circular icons represent different symptoms: a hand holding a knee (Lyme Arthritis), a hand holding a head (Lyme Neuroborreliosis), and a heart (Lyme Carditis).

Lyme Arthritis

Lyme Neuroborreliosis

Lyme Carditis

Regulatory Statement

The general wellness test intended uses relate to sustaining or offering general improvement to functions associated with a general state of health while making reference to diseases or conditions. This test has been laboratory developed and its performance characteristics determined by Vibrant America LLC and Vibrant Wellness, CLIA-certified and CAP-accredited laboratory performing the test. The test has not been cleared or approved by the U.S. Food and Drug Administration (FDA). Although FDA does not currently clear or approve laboratory-developed tests in the U.S., certification of the laboratory is required under CLIA to ensure the quality and validity of the tests.

Revised 08/01/2024