

UTI Zoomer



Discover the Root Cause of Your Unexplained Symptoms with the UTI Zoomer.

Living with persistent urinary symptoms like frequent urination, discomfort, or recurrent infections can be stressful. The comprehensive UTI Zoomer identifies common pathogens and key markers that could be causing your symptoms, empowering you and your healthcare provider to take action.

UTIs don't just disrupt daily life—they can impact overall health. Symptoms like burning during urination, abdominal pain, and urgency are often caused by bacteria such as *E. coli*, *Klebsiella pneumoniae*, and *Candida* species. Without proper identification and treatment, these infections can persist and recur.

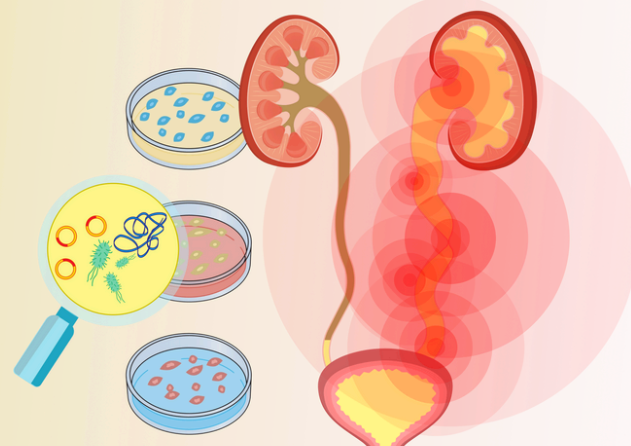
The UTI Zoomer detects harmful pathogens and provides antibiotic and supplement suggestions, along with a detailed urinalysis that evaluates critical markers like glucose, pH, and protein levels. This comprehensive approach supports accurate evaluation and a tailored plan for lasting relief.

Why Choose the UTI Zoomer?

- **Get Clarity on Your Symptoms:** No more uncertainty. Discover whether your symptoms could be caused by common pathogens, rare pathogens, or multiple pathogens and understand how they impact your UTI.
- **Early Detection for Better Outcomes:** Identifying infections early allows you and your healthcare provider to act quickly to prevent complications and reduce the risk of future infections.
- **Personalized Treatment Plan:** With detailed information on the specific pathogens and urinary markers affecting your health, your healthcare provider can create a plan that targets the root cause of your symptoms, giving you more effective and lasting relief.
- **Peace of Mind:** Knowing what's happening in your body can alleviate the stress and worry that often comes with unexplained symptoms. Empower yourself with knowledge to confidently manage your health.

How It Works

The UTI Zoomer evaluates bacterial and fungal pathogens, antibiotic resistance genes, and key urinalysis markers that impact UTI. A simple urine sample is all it takes to measure these markers, offering a comprehensive understanding of your urinary system's health and potential risks.



Key Markers Include:

- **Bacterial Pathogens:** *E. coli*, *Klebsiella pneumoniae*, *Proteus mirabilis*, and more—common causes of UTIs that can be difficult to treat if not properly identified.
- **Fungal Pathogens:** *Candida* species—fungal infections that can complicate UTIs and require specific antifungal treatments.
- **Urinalysis Markers:** Glucose, protein, pH, and specific gravity—essential markers that provide insight into your overall UTI and kidney function.

This comprehensive analysis helps your healthcare provider identify the root cause of your symptoms, guiding you towards the most effective treatment plan.

Who Should Take This Test?



- You experience **recurrent urinary tract infections** or **chronic urinary symptoms**.
- **You haven't responded to standard UTI treatments** and want a more precise evaluation.
- You have a **history of urinary tract issues** or are at **higher risk for kidney complications**.
- You want a **comprehensive understanding of your UTI** for peace of mind.


Take the First Step Towards Better Health

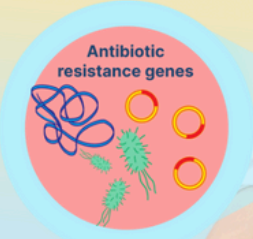
Don't let unexplained urinary symptoms control your life. The UTI Zoomer gives you the answers you need to take charge of your health and well-being.

Start your journey to relief and a better quality of life by ordering the UTI Zoomer today.


Identifies a wide range of bacterial and fungal pathogens commonly associated with urinary tract infections (UTIs) and which antibiotic resistance genes are present

 **Urinalysis**  **UTI Pathogens**

 **Management Suggestions**



Antibiotic resistance genes



Regulatory Statement

The general wellness test intended uses relate to sustaining or offering general improvement to functions associated with a general state of health while making reference to diseases or conditions. This test has been laboratory developed and its performance characteristics determined by Vibrant America LLC and Vibrant Wellness, CLIA-certified and CAP-accredited laboratory performing the test. The test has not been cleared or approved by the U.S. Food and Drug Administration (FDA). Although FDA does not currently clear or approve laboratory-developed tests in the U.S., certification of the laboratory is required under CLIA to ensure the quality and validity of the tests.