

Tickborne Complete 2.0 Panel

At Home

Blood

DBS

Key Clinical Messages



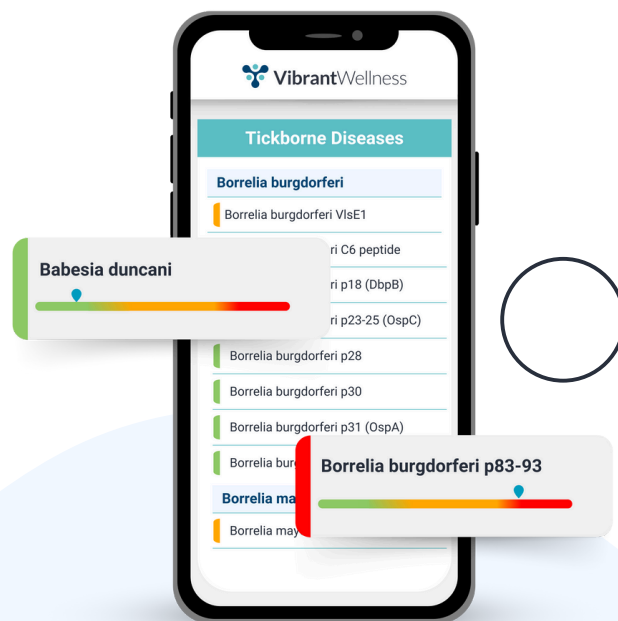
What is the Tickborne Complete 2.0 Panel?

The Tickborne Diseases Panel measures a wide range of IgG and IgM antibodies and detects DNA from pathogens associated with Lyme disease, tickborne relapsing fever, and co-infections such as Babesia, Bartonella, and Ehrlichia. The panel also evaluates viral and opportunistic infections, including Epstein-Barr Virus (EBV), Cytomegalovirus (CMV), and Powassan virus. With its advanced technology, the panel identifies early and late-stage infections and distinguishes between active and past exposures. This comprehensive test empowers providers to detect hidden infections, understand the root causes of chronic symptoms, and develop targeted treatment strategies for better patient outcomes.

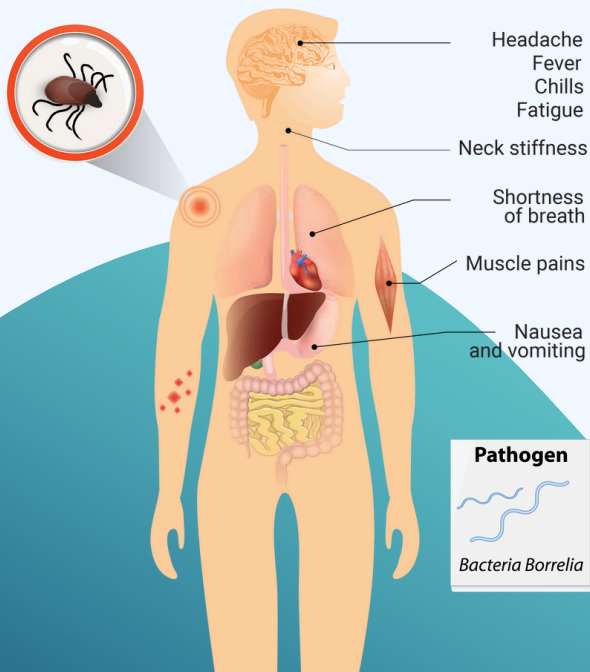
28 Lyme Disease & Relapsing Fever Borrelia Markers

14 Tickborne Coinfections & Bacterial Pathogens Markers

20 Viral & Opportunistic Infections Markers



**Download the
Sample Report**



Why Order?

Providers can use this panel to detect active infections, monitor immune responses, and identify co-infections that complicate diagnosis and treatment. The comprehensive data supports evidence-based decision-making, enabling providers to create targeted care plans and improve outcomes for patients with complex or unexplained symptoms. This panel is also valuable for monitoring treatment efficacy and assessing reinfections.

The Vibrant Advantage

The Tickborne Diseases Panel offers advanced testing with key benefits, including:

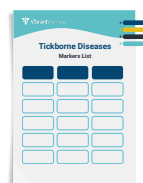
- Comprehensive detection of Lyme disease, relapsing fever, and co-infections.
- Innovative CLIA and PCR methodologies for superior accuracy.
- Broad analysis covering antibodies and pathogen DNA.
- Rapid turnaround times with actionable results supported by a CLIA-certified laboratory.



Synergistic Testing Options

- **Gut Zoomer Test, Candida + IBS Profile** - For aid in diagnosing and treating microbiome dysregulation following antibiotic usage.
- **Wheat Zoomer** - Offers an intestinal permeability panel which can aid in diagnosing leaky gut syndrome that may result from extended antibiotic usage.
- **Mycotoxins Test** - Is it Lyme or mycotoxins, or both? Numerous symptoms overlap between Lyme and Mycotoxin related illnesses. It may be more challenging to resolve tickborne disease when mold and mycotoxin illness is present.
- **Neural Zoomer Plus** - Specific neurological antibodies have been studied to be associated with Lyme diseases, such as Anti-tubulin, Anti-NMDA, Anti-neuron specific enolase, Anti-GM1, anti-dopamine receptor 1, and anti-dopamine receptor 2.
- **Total Immunoglobulins** - Serology testing is based on normal, functional immunoglobulin production. This test assesses the number of immunoglobulins, which is helpful in those with suspected immune function compromise or those undergoing IV IgG therapy.

Additional Resources



**Markers
One-Sheet**



**Patient
One-Pager**



Limitations

Please note the information provided by Vibrant Wellness is intended solely for research and informational purposes to help inform lifestyle choices aimed at potential risk mitigation. The information is not intended to be used by the patient for any diagnostic purpose and is not a substitute for medical advice by a healthcare practitioner. Please consult a licensed healthcare practitioner for any questions regarding diagnosis, prevention, or treatment of any disease or impairment of, or the assessment of the health of, human beings. The tests listed on web page titled "[New York State Approved Tests](#)" can be used for diagnostic purposes as per their intended use.

Regulatory Disclaimer

Please note the information provided by Vibrant Wellness is intended solely for research and informational purposes to help inform lifestyle choices aimed at potential risk mitigation. The tests were developed, and their performance characteristics were determined by Vibrant America and Vibrant Genomics. They have not been cleared or approved by US Food and Drug Administration. The laboratory is certified under the Clinical Laboratory Improvements Amendments (CLIA) as qualified to perform high complexity testing. The laboratory is also in compliance with College of American Pathologists (CAP) regulations. The tests listed on web page titled "[New York State Approved Tests](#)" are cleared by FDA and also comply with the New York State Department of Health regulations.

Revised 5/21/2025